

XL-1Turbo

Security System User Guide



Quick Reference

Turn System On

Check to make sure the system is READY - Green ready light is lit
Enter your four digit user code - the On/Off (Arm) light will light
Exit through a door designated by your installer as an exit/entry door.

Turn System Off

Enter through a door designated by your installer as an exit/entry door.

Enter your four digit user code

The System On (Arm) light will go out

Turn System On and Stay Inside

Check to make sure the system is READY - Green ready light is lit

Followed by your user code

The On/Off (arm) light and the Stay light will both light

REMEMBER: You must turn the system off if you want to open the door or leave the premises after the exit time has passed.

Turn The System On: Perimeter Sensors Instant Mode and Stay Inside

Check to make sure the system is READY - Green ready light is lit

Followed by

Followed by your user code

The On/Off light, the Instant light and the Stay light will all be on

Smoke Detector Reset

Enter your four digit user code

Alarm Company Service Number _____

Table of Contents

Introduction	4
System Reference.....	5
Turning The System On And Off.....	6
Turn the System On and Leave	6
Not Ready	6
To Turn the System On - Not Ready.....	7
Turn System On and Stay Inside.....	7
Turn the System On: Perimeter Sensors Instant Mode and Stay Inside.....	8
Bypass.....	8
Unbypass	9
Turn the System Off.....	9
User Codes	11
Add or Change a User Code	11
Delete a User Code	11
Keypad Send Help Conditions.....	12
Send Help Conditions	12
Duress	12
Quick Commands.....	13
Quick On - (Quick Arming).....	13
Quick Forced On	13
Quick Bypass	13
Set Time/Date	14
Turn Chime On/Off.....	15
Keypad Indicators and Keys.....	16
Testing the System	18
System Test	18
Battery Test.....	18
Glossary	19
Recommendations For Proper Protection.....	22
Recommendations For Smoke And Heat Detectors.....	22
Recommendations For Proper Intrusion Protection.....	23

Introduction

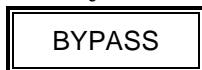
Congratulations on your decision to protect your home or business with the XL-1T security system. You have chosen a reliable, state of the art security system that is remarkably easy to operate. Your system has been professionally installed by your local Security Company who can explain the specifics of your system.

The keypad is the input and display device for your security system. The following keypad models can interact with your system. Your Security Company will suggest the model most appropriate for your premises and your needs.

XK-104 — A surface mount keypad containing indicator lights for each of the 6 zones (areas of protection). The door covering the buttons is optional and can be removed.

6805 — Keypad with a plastic case and a two line English read-out LCD (liquid crystal display). Status messages for the zones (areas of protection) are displayed in simple English.

Throughout this manual the following conventions are used to display the keystrokes required to perform the functions.



Button labeled **BYPASS**



Button labeled **INSTANT**



Button labeled **STAY**



Button labeled **CODE**

Four digit user code

Please keep your manual in a convenient location so you can refer to it if needed.

System Reference

ZONE PROTECTED AREA

1 _____

2 _____

3 _____

4 _____

Entry time _____ Door _____ Exit time _____

Entry time _____ Door _____

USER ID ASSIGNED TO

1 _____ (MASTER USER *)

2 _____

3 _____

4 _____

5 _____

6 Ambush/Duress Code -Yes No If No _____

*Master User can Add, Change, or Erase other user codes.

The following **SEND HELP ALERTS** are programmed into my system. **Both Buttons must be pressed at the same time to activate the alert.**

BUTTONS DESCRIPTION

Left pair or 7 and 9 _____

Center pair or 1 and 3 _____

Right pair or * and # _____

MONITORING STATION INFORMATION

Account # _____

Telephone # _____

Turning The System On And Off

You can turn the Burglar portion of your security system on and off. Before you turn the system on it must be ready. If you have a protected door open, or someone is moving by a motion detector the system will not show ready

The system is ready if the ready light is on or if the display shows:

SYSTEM READY

Turn the System On and Leave

Enter your four digit user code

The System On (Arm) light will go on or the display will show:

ON: AWAY

Exit through a door designated by your installer as an exit/entry door. You must leave within the period of time known as the exit time. Check the reference sheet for the time that has been set for your system.

Not Ready

If the system is **not** ready to be armed the READY light will be **off** and the Zone lights will show which zone or zones are not ready. The zone lights indicate the following conditions or the display will show as below:

Fast Blink	Alarm
Slow Blink/Low Intensity	Bypass
Slow Pulse	Trouble
Solid On	Not Ready

Example: If the **Ready light** is **not** lit and the **zone one** light is **solid on**. An alarm sensor on zone one is not normal. This might mean that a window is open or someone is walking through a motion sensor. Check all sensors on zone one and resolve the problem. When

Turning The System On And Off (cont'd)

all sensors are normal the Ready light will come on and the zone light will go out.

Display shows:

SYSTEM NOT READY

NOT RDY	ZN 01
ZONE 1	

To Turn the System On - Not Ready

Determine which zone or zones is not ready, resolve the problem and turn the system on normally. If the problem cannot be resolved you may **bypass** the zone that is not ready. Bypassing should only be done if the problem on the zone cannot be resolved OR if you intentionally wish to leave the zone off. Example: you wish to keep the window open for ventilation. **Zones that are bypassed are not protected when the system is on.** See Bypass for the correct procedure.

Turn System On and Stay Inside

To turn the perimeter portion of your burglar alarm on and move around freely inside is the **STAY** mode.

Check to make sure the system is READY; when ready press:

STAY

 Followed by your user code

If successful the On/Off (arm) light will be lit and the Stay light will also be lit or the display shows:

ON: STAY

REMEMBER: You must turn the system off if you want to open the door or leave the premises after the exit time has passed.

Turning The System On And Off (cont'd)

Turn the System On: Perimeter Sensors Instant Mode and Stay Inside

In **INSTANT STAY** mode the burglar alarm system is on and the time delays are eliminated from your normal entry/exit door(s). All interior protection is off so you are free to move around inside.

Check to make sure the system is **READY**, when ready press:

Followed by

Followed by your user code

If successful the On/Off light, the Instant light and the Stay light will all be on or the display shows:

Bypass

Bypass excludes a zone or zones of protection from your security system. Bypassing can only be done while the system is turned off.

Press the Bypass Button followed by your user code and then the Zone # (1-6) to be bypassed.

ZONE

NOTE: Bypassed zones are not protected when the system is turned on. After the bypass command has been accepted the keypad will sound one long beep and the zone or zones bypassed will slowly blink or the display shows:

NOTE: Temporary users (i.e. baby sitters, housekeepers, etc.) should not be shown the Bypass procedure.

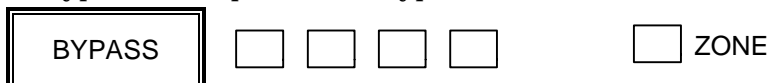
Bypassed zones will automatically be included in the system again when you turn the system off. You may also manually unbypass (put the zone back into the system) by repeating the bypass function.

Turning The System On And Off (cont'd)

Unbypass

Unbypass returns a bypassed zone to normal operation.

Unbypass is a repeat of the bypass function.



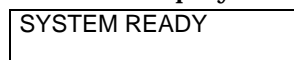
After unbypassing the zone display will show the state of the zones.

Turn the System Off

When you turn off the system you turn off only the burglar portion of your system, any smoke or heat detectors and panic buttons will remain on. You must enter through a designated entry door and turn off the system within the time allowed. You can have different amounts of time for different entry points. See your system reference sheet for the times established for your system.

Enter your four digit user code

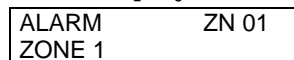
If no alarms have taken place, the On/Off light (labeled arm) will go off or the display shows:



If alarms occurred when the system was on, or if a trouble condition exists they will display on the zone indicator lights as follows:

Fast Blink	Alarm
Slow Blink/Low Intensity	Bypass
Slow Pulse	Trouble
Solid On	Not Ready

or the display shows:



Burglary Alarms will sound a steady sound through the keypad(s) and fire alarms will generate a pulsing sound.

Turning The System On And Off (cont'd)

Important: If an intrusion has taken place while you were away, do not enter until the location has been checked. Call for help from a neighbor's house and wait for the police.

After you have turned the system off with your user code the message on display keypads will show:

ALARM MEM	ZN 01
ZONE 1	

To clear the display of the alarm or trouble conditions and silence the audible alert :

Enter your four digit user code again.

User Codes

Add or Change a User Code

Users can be entered or modified directly through the keypad. Your system can have up to 6 different User Codes. User #1 is the **Master User** and is the only one allowed to add, or delete other users.

Press the Code button followed by the four digit master user code then the user # and the new four digit user code. The keypad will beep after each digit is pressed.

	Master User Code	User ID	New User Code
<input type="text" value="CODE"/>	<input type="text"/> <input type="text"/> <input type="text"/> <input type="text"/>	<input type="text"/>	<input type="text"/> <input type="text"/> <input type="text"/> <input type="text"/>

The system reference page will help you plan and record your users. On this sheet your installer will indicate if you have chosen to dedicate a user code to send an emergency signal in the case of Ambush or Duress.

Delete a User Code

To delete user #3, press the code button followed by the four digit master user code, then the user # then * to delete.

	Master User Code	User ID	* to delete
<input type="text" value="CODE"/>	<input type="text"/> <input type="text"/> <input type="text"/> <input type="text"/>	<input type="text" value="3"/>	<input type="text" value="*"/>

NOTE: User #1, the master user, cannot be deleted but it can be changed using the ADD OR CHANGE USER PROCEDURE.

Keypad Send Help Conditions

Send Help Conditions

Your system can be programmed for 3 separate Send Help Alerts which would send an emergency signal to your central station. If programmed, the following key combinations on the keypad generate the Send Help Alerts.

Left pair or 7 and 9

Center pair or 1 and 3

Right pair or * and #

See the System Reference sheet to see which have been programmed for your system.

Duress

Your system can be programmed to send an emergency signal to the Central Station if you are forced to enter the premises. If you choose to include this feature, User Code number 6 is dedicated to this function and must only be used under a duress circumstance.

Quick Commands

Quick On - (Quick Arming)

Yes No

If programmed by your installer, QUICK ON, or Quick Arming allows you to turn the system on to the away mode without user code. NOTE: Turning your system Off always requires a valid User Code.

1

Quick Forced On

Yes No

If programmed by your installer Quick Forced On, allows you to turn the burglar portion of your alarm system on to the away mode automatically bypassing all zones that are not ready.

2

NOTES: A valid user code is still required to turn the system off. This feature is disabled on UL installations.

Quick Bypass

Yes No

If you have quick bypass programmed for your system you will not have to use your user code to bypass zones. The quick bypass procedure is:

BYPASS	<input type="checkbox"/> ZONE (1-6)
--------	-------------------------------------

NOTE: Bypassed zones are not protected when the system is turned on. After the bypass command has been accepted the keypad will sound one long beep and the zone or zones bypassed will slowly blink or the display will show:

BYPASSED	ZN 01
ZONE 1	

NOTE: Temporary users (i.e. baby sitters, housekeepers, etc.) should not be shown the Bypass procedure.

Quick Commands (cont'd)

Set Time/Date

The AC-based clock can be set, but not viewed, at the keypad.

To Set Time/Date enter: **# 3 [Hours] [Minutes] [Month] [Day]
[Year]**

Where:

[Hours] = 2 digits (00-23)

[Minutes] = 2 digits (00-59)

[Month] = 2 digits (01-12)

[Day] = 2 digits (01-31)

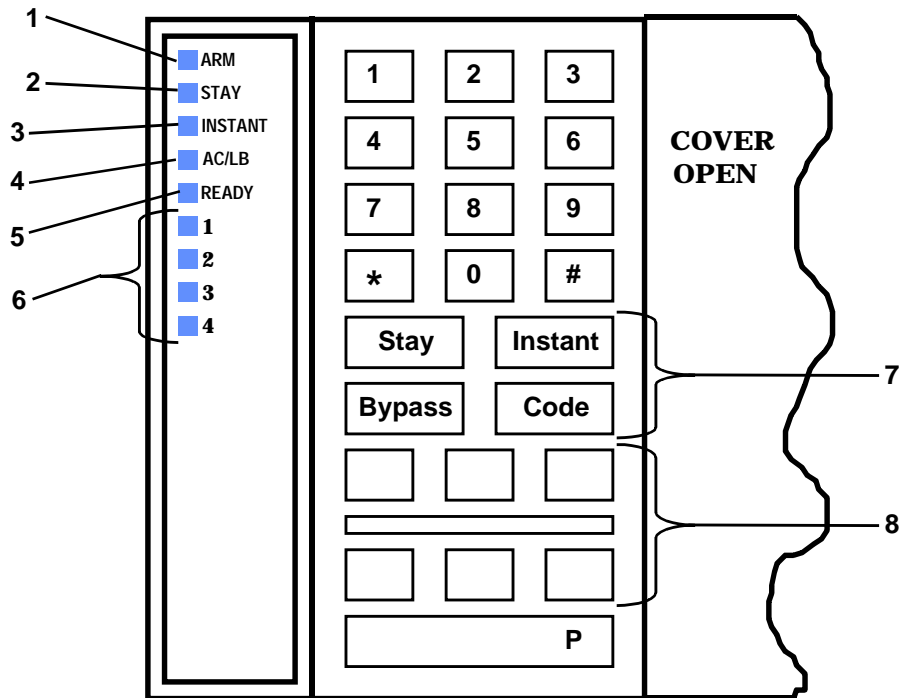
[Year] = 2 digits (00-99)

Turn Chime On/Off

Chime is an optional feature that causes the keypad to chime when selected doors are opened when the burglary protection is off or disarmed.

Only your installer can program a zone for the chime feature, but once programmed you can turn chime on or off to meet your daily needs. To turn chime on or off, press # 6.

Keypad Indicators and Keys



SOUNDER -

The sounder in the keypad beeps whenever the keypad keys are pressed. The sounder also beeps when the system is on and you open a delay door as a warning to remind you to turn the system off. The sounder will produce fast beeps when a message is received by the central station. It is important to be careful when turning the system on, because if the system is not ready and the user code is entered, the keypad will beep 4 times showing that there is a problem and that the system has not accepted your request.

FIRE PROTECTION -

Fire protection is always active and Fire conditions are given priority.

FIRE ALARM -

Audible and Visual Indicators. The programmed fire zone LED and the ARM LED will blink fast to indicate a fire alarm. The sounder in the keypad will pulse on and off following the bell or siren output.

READY LED -

A FLASHING ready LED indicates that the system is in the Installer programming mode. The Fire and Burglary zones are disabled while in this mode. Press the "STAY" key to return to normal operation. Contact your installation company if mode persists.

Keypad Indicators and Keys (cont'd)

1. ARM/DISARM - When lit, burglar portion of system is on. When off, the burglar system is off. Blinking LED indicates communication failure. Check to see if you phones are working.
2. STAY - Indicates the system in on with interior zones excluded so you can move around freely inside the premises.
3. INSTANT - Indicates that exit/entry delay times have been eliminated.
4. AC/Low Battery - When lit this indicates that your system is running on electricity (AC power). When off, the system is running on the standby battery. If off, check to see if the system is plugged in and if so, make sure you have not blown the fuse or circuit breaker.
5. READY - When lit, system is ready to be turned on. When off, check zone status indicators to see which zone is not ready.
6. ZONE STATUS INDICATORS - Display status as follows:

Fast Blink	Alarm
Slow Blink/Low Intensity	Bypass
Slow Pulse	Trouble
Solid On	Not Ready
7. FUNCTION BUTTONS - Used for system input
8. SEND HELP BUTTONS - To activate, both top and bottom buttons must be pressed at the same time.

Testing the System

System Test

It is recommended that you test your system once a week using the following procedure:

NOTE: If your system is monitored, contact your Central Station before you perform this test.

1. Turn your Security System on.
2. Wait until your exit time is over and then activate the system by opening a protected zone. (For example: a window or door).
3. Confirm that the alarm sounding device (bell or siren) sounds. If your system is connected to a central station the keypad will sound the ringback tone to confirm that the signal was received.
4. Turn the Security System off.
5. Call the Central Station to tell them you are done testing.

Battery Test

It is recommended that you test your Battery once a month. In order to test your backup/standby battery, the following procedure should be followed:

1. Unplug the transformer from the AC outlet by removing the restraining screw which secures the transformer to the wall. (Note: the screw is not present on the models sold in Canada.)
2. Observe that the AC indicator light on the keypad goes off.
3. Activate your alarm by performing the above SYSTEM TEST. Remember to contact your Central Station if your system is monitored.
4. Plug the transformer into the AC outlet and secure with the restraining screw. (Note: the screw is not present on the models sold in Canada.)

Glossary

- AC INDICATOR:** When lit, the system is running on AC; when not lit, the system is running on the backup battery.
- ALARM:** Indication of an intrusion, fire alarm, or other condition. An alarm is usually indicated by horns/sirens and keypad sounding. It can also be programmed to be "silent" so that it will not be heard by an intruder but will still send an emergency message to the central station (e.g. bank holdup switch).
- ARMED:** See ON/OFF.
- AWAY:** A system setting that protects the premises while it is unoccupied. All burglary sensors are active.
- BURGLARY/FIRE:** The two major functions of a Security System. The Burglary sensors protect against unauthorized entry into your premises. The Burglary protection can be turned on and off and programmed for special levels of access and notification. Fire protection is always on and cannot be turned off.
- BYPASS FEATURE:** Allows you to exclude a selected zone or zones from the burglar alarm protection.
- BYPASS BUTTON:** A button on the keypad used to activate the Bypass Feature.
- CENTRAL STATION:** Signal Monitoring Center contacted by your Security System over the telephone and/or other communication channels when alarms are activated if your system is programmed to communicate alarms off site. The Central Station will follow their procedures and your instructions for contacting the proper authorities when a signal is received.
- CHIME FEATURE:** An optional feature that causes the keypad to chime for one second when selected doors are opened when the burglary protection is off or disarmed. Once programmed by your installer you can turn chime on and off with #6.
-
-

Glossary (cont'd)

- DISARMED:** See ON/OFF.
- DURESS CODE:** A special user code (defined for user number 6) to be used if someone forces you to disarm your system. Disarming with the Duress Code will cause an emergency signal to be set to the central station, if programmed.
- ENTRY DELAY:** The period of time allowed between opening a designated entry/exit door and turning off the alarm system before the system will register an alarm condition. This is determined at the time of installation. Your system supports two entry times allowing you to have a different length of time for different doors.
- EXIT DELAY:** The period of time allowed between turning the system on and leaving through a designated exit/entry door. This is determined at the time of installation.
- INTERIOR ZONE:** A point or group of points that protect the interior of your premises. You may want to turn the perimeter portion of your system on while leaving the interior zones off allowing you to move freely inside, opening interior doors and passing by motion detectors without causing an alarm.
- KEYPAD:** Device used to control your system. It displays alarm and trouble messages, shows faulted zones and allows you to turn the system on/off by using the buttons. Your system will have one or more keypads.
- ON/OFF:** These terms refer to the burglary portion of your security system. There are several levels of operation which allow you to protect part of your premises while you remain inside. Fire sensors and other emergency and environmental protection points are always active, and are not affected in any way by turning the burglary portion of your Security System on or off. Armed, a term that is sometimes used, means "system on" and Disarmed means "system off." See ON-INSTANT, ON-STAY and STAY.

Glossary (cont'd)

- ON/OFF INDICATOR:** Red light in the upper portion of the keypad labeled Armed. When lit, some part of the burglar alarm system is on; when not lit, the burglary portion of the system is off.
- ON-STAY:** A system setting that turns on the perimeter protection of the building but allows movement throughout the inside.
- PANIC BUTTON:** A push button which allows you to signal the Central Station that you need immediate assistance. Your system has programmable Keypad Send Help Alerts which can also serve as Panic buttons.
- PERIMETER ZONE:** A perimeter zone is a group of points that protect the exterior of your premises. Your outside doors and windows would be programmed as perimeter zones.
- SENSOR:** The actual alarm sensor installed to detect an intrusion, fire, or environmental problem, such as a door contact, motion sensor, or smoke detectors.
- SYSTEM:** Your entire Security System, including the control panel, keypads, alarm sensors, and other components.
- USER CODE:** A user code is a 4 digit code required to operate the system. The system supports up to 6 separate user codes, including one master user who can add/delete other user codes. Two of the user codes may be dedicated to special functions as defined by your alarm company at the time of installation. (See the User Code List in the back of this manual)
- ZONE:** A zone is a collection of sensors with common characteristics grouped together for your operating convenience. The system supports up to 6 protection zones.

Recommendations For Proper Protection

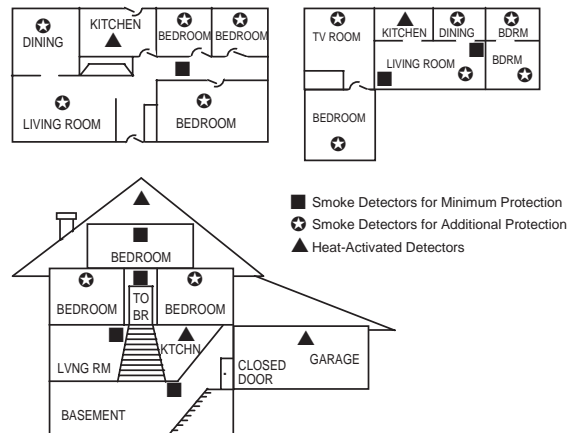
THE FOLLOWING RECOMMENDATIONS FOR THE LOCATION OF FIRE AND BURGLARY DETECTION DEVICES HELP PROVIDE PROPER COVERAGE FOR THE PROTECTED PREMISES.

Recommendations For Smoke And Heat Detectors

With regard to the number and placement of smoke/heat detectors, we subscribe to the recommendations contained in the National Fire Protection Association's (NFPA) Standard #72 noted below.

Early warning fire detection is best achieved by the installation of fire detection equipment in all rooms and areas of the household as follows: For minimum protection a smoke detector should be installed outside of each separate sleeping area, and on each additional floor of a multi-floor family living unit, including basements. The installation of smoke detectors in kitchens, attics (finished or unfinished), or in garages is not normally recommended.

For additional protection the NFPA recommends that you install heat or smoke detectors in the living room, dining room, bedroom(s), kitchen, hallway(s), attic, furnace room, utility and storage rooms, basements and attached garages.



Recommendations For Proper Protection (cont'd)

In addition, we recommend the following:

- Install a smoke detector inside every bedroom where a smoker sleeps.
- Install a smoke detector inside every bedroom where someone sleeps with the door partly or completely closed. Smoke could be blocked by the closed door. Also, an alarm in the hallway outside may not wake up the sleeper if the door is closed.
- Install a smoke detector inside bedrooms where electrical appliances (such as portable heaters, air conditioners or humidifiers) are used.
- Install a smoke detector at both ends of a hallway if the hallway is more than 40 feet (12 meters) long.
- Install smoke detectors in any room where an alarm control is located, or in any room where alarm control connections to an AC source or phone lines are made. If detectors are not so located, a fire within the room could prevent the control from reporting a fire or an intrusion.

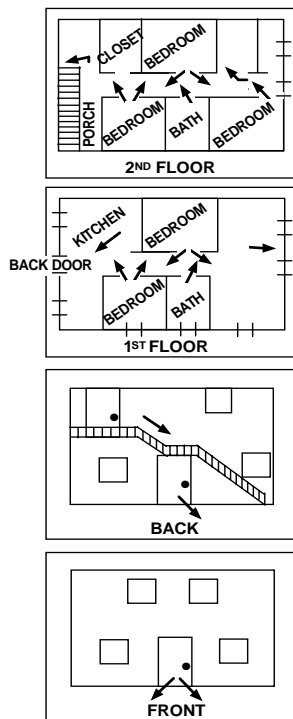
Recommendations For Proper Intrusion Protection

For proper intrusion coverage, sensors should be located at every possible point of entry to a home or commercial premises. This would include any skylights that may be present, and the upper windows in a multi-level building.

In addition, we recommend that radio backup be used in a security system so that alarm signals can still be sent to the alarm monitoring station in the event that the telephone lines are out of order (alarm signals are normally sent over the phone lines, if connected to an alarm monitoring station).

Emergency Evacuation

Establish and regularly practice a plan of escape in the event of fire. The following steps are recommended by the National Fire Protection Association:



1. Position your detector or your interior and/or exterior sounders so that they can be heard by all occupants.

2. Determine two means of escape from each room. One path of escape should lead to the door that permits normal exit from the building. The other may be a window, should your path be impassable. Station an escape ladder at such windows if there is a long drop to the ground.

3. Sketch a floor plan of the building. Show windows, doors, stairs and rooftops that can be used to escape. Indicate escape routes for each room. Keep these routes free from obstruction and post copies of the escape routes in every room.

4. Assure that all bedroom doors are shut while you are asleep. This will prevent deadly smoke from entering while you escape.

5. Try the door. If the door is hot, check your alternate escape route. If the door is cool, open it cautiously. Be prepared to slam the door if smoke or heat rushes in.

6. Where smoke is present, crawl on the ground; do not walk upright. Smoke rises and may overcome you. Clearer air is near the floor.

7. Escape quickly; don't panic.

8. Establish a common meeting place outdoors, away from your house, where everyone can meet and then take steps to contact the authorities and account for those missing. Choose someone to assure that nobody returns to the house — many die going back.

WARNING!

THE LIMITATIONS OF THIS ALARM SYSTEM

While this system is an advanced design security system, it does not offer guaranteed protection against burglary or fire or other emergency. Any alarm system, whether commercial or residential, is subject to compromise or failure to warn for a variety of reasons. For example:

- Intruders may gain access through unprotected openings or have the technical sophistication to bypass an alarm sensor or disconnect an alarm warning device.
- Intrusion detectors (e.g. passive infrared detectors), smoke detectors, and many other sensing devices will not work without power. Battery operated devices will not work without batteries, with dead batteries, or if the batteries are not put in properly. Devices powered solely by AC will not work if their AC power supply is cut off for any reason, however briefly.
- Signals sent by wireless transmitters may be blocked or reflected by metal before they reach the alarm receiver. Even if the signal path has been recently checked during a weekly test, blockage can occur if a metal object is moved into the path.
- A user may not be able to reach a panic or emergency button quickly enough.
- While smoke detectors have played a key role in reducing residential fire deaths in the United States, they may not activate or provide early warning for a variety of reasons in as many as 35% of all fires, according to data published by the Federal Emergency Management Agency. Some of the reasons smoke detectors used in conjunction with this System may not work are as follows. Smoke detectors may have been improperly installed and positioned. Smoke detectors may not sense fires that start where smoke cannot reach the detectors, such as in chimneys, in walls, or roofs, or on the other side of closed doors. Smoke detectors also may not sense a fire on another level of a residence or building. A second floor detector, for example, may not sense a first floor or basement fire. Moreover, smoke detectors have sensing limitations. No smoke detector can sense every kind of fire every time. In general, detectors may not always warn about fires caused by carelessness and safety hazards like smoking in bed, violent explosions, escaping gas, improper storage of flammable materials, overloaded electrical circuits, children playing with matches, or arson. Depending upon the nature of the fire and/or the locations of the smoke detectors, the detector, even if it operates as anticipated, may not provide sufficient warning to allow all occupants to escape in time to prevent injury or death.
- Passive Infrared Motion Detectors can only detect intrusion within the designed ranges as diagrammed in their installation manual. Passive Infrared Detectors do not provide volumetric area protection. They do create multiple beams of protection, and intrusion can only be detected in unobstructed areas covered by those beams. They cannot detect motion or intrusion that takes place behind walls, ceilings, floors, closed doors, glass partitions, glass doors, or windows. Mechanical tampering, masking, painting or spraying of any material on the mirrors, windows or any part of the optical system can reduce their detection ability. Passive Infrared Detectors sense changes in temperature; however, as the ambient temperature of protected area approaches the temperature range of 90° to 105°F, the detection performance can decrease.

WARNING!
THE LIMITATIONS OF THIS ALARM SYSTEM
(continued)

- Alarm warning devices such as sirens, bells or horns may not alert people or wake up sleepers if they are located on the other side of closed or partly open doors. If warning devices sound on a different level of the residence from the bedrooms, then they are less likely to waken or alert people inside the bedrooms. Even persons who are awake may not hear the warning if the alarm is muffled from a stereo, radio, air conditioner or other appliance, or by passing traffic. Finally, alarm warning devices, however loud, may not warn hearing-impaired people or waken deep sleepers.
- Telephone lines needed to transmit alarm signals from a premises to a central monitoring station may be out of service or temporarily out of service. Telephone lines are also subject to compromise by sophisticated intruders.
- Even if the system responds to the emergency as intended, however, occupants may have insufficient time to protect themselves from the emergency situation. In the case of a monitored alarm system, authorities may not respond appropriately.
- This equipment, like other electrical devices, is subject to component failure. Even though this equipment is designed to last as long as 10 years, the electronic components could fail at any time.

The most common cause of an alarm system not functioning when an intrusion or fire occurs is inadequate maintenance. This alarm system should be tested weekly to make sure all sensors and transmitters are working properly.

Installing an alarm system may make one eligible for lower insurance rates, but an alarm system is not a substitute for insurance. Homeowners, property owners and renters should continue to act prudently in protecting themselves and continue to insure their lives and property.

We continue to develop new and improved protection devices. Users of alarm systems owe it to themselves and their loved ones to learn about these developments.

“FEDERAL COMMUNICATIONS COMMISSION (FCC) Part 15 STATEMENT”

This equipment has been tested to FCC requirements and has been found acceptable for use. The FCC requires the following statement for your information:

This equipment generates and uses radio frequency energy and if not installed and used properly, that is, in strict accordance with the manufacturer’s instructions, may cause interference to radio and television reception. It has been type tested and found to comply with the limits for a Class B computing device in accordance with the specifications in Part 15 of FCC Rules, which are designed to provide reasonable protection against such interference in a residential installation. However, there is no guarantee that interference will not occur in a particular installation. If this equipment does cause interference to radio or television reception, which can be determined by turning the equipment off and on, the user is encouraged to try to correct the interference by one or more of the following measures:

- If using an indoor antenna, have a quality outdoor antenna installed.
- Reorient the receiving antenna until interference is reduced or eliminated.
- Move the receiver away from the control/communicator.
- Move the antenna leads away from any wire runs to the control/communicator.
- Plug the control/communicator into a different outlet so that it and the receiver are on different branch circuits.

If necessary, the user should consult the dealer or an experienced radio/television technician for additional suggestions.

The user or installer may find the following booklet prepared by the Federal Communications Commission helpful: “Interference Handbook”

This booklet is available from the U.S. Government Printing Office, Washington, DC 20402.

The user shall not make any changes or modifications to the equipment unless authorized by the Installation Instructions or User’s Manual. Unauthorized changes or modifications could void the user’s authority to operate the equipment.

IN THE EVENT OF TELEPHONE OPERATIONAL PROBLEMS

In the event of telephone operational problems, disconnect the control by removing the plug from the RJ31X (CA38A in Canada) telephone wall jack. We recommend that your certified installer demonstrate disconnecting the phones on installation of the system. Do not disconnect the phone connection inside the control/communicator. Doing so will result in the loss of your phone lines. If the regular phone works correctly after the control/communicator has been disconnected from the phone lines, the control/communicator has a problem and should be returned for repair. If upon disconnection of the control/communicator, there is still a problem on the line, notify the telephone company that they have a problem and request prompt repair service. The user may not under any circumstances (in or out of warranty) attempt any service or repairs to the system. It must be returned to the factory or an authorized service agency for all repairs.

FBI LIMITED WARRANTY

Fire Burglary Instruments, Inc., a subsidiary of Pittway Corporation, and Pittway Corporation, its divisions, subsidiaries and affiliates ("Seller"), 149 Eileen Way, Syosset, New York 11791, warrants its security equipment (the "product") to be free from defects in material and workmanship for one year from date of original purchase, under normal use and service. Seller's obligation is limited to repairing or replacing, at its option, free of charge for parts, labor, or transportation, any product proved to be defective in materials or workmanship under normal use and service. Seller shall have no obligation under this warranty or otherwise if the product is altered or improperly repaired or serviced by anyone other than the Seller. In case of defect, contact the security professional who installed and maintains your security equipment or the Seller for product repair.

This one year Limited Warranty is in lieu of all other expressed warranties, obligations or liabilities. THERE ARE NO EXPRESS WARRANTIES, WHICH EXTEND BEYOND THE FACE HEREOF. ANY IMPLIED WARRANTIES, OBLIGATIONS OR LIABILITIES MADE BY SELLER IN CONNECTION WITH THIS PRODUCT, INCLUDING ANY IMPLIED WARRANTY OF MERCHANTABILITY, OR FITNESS FOR A PARTICULAR PURPOSE OR OTHERWISE, ARE LIMITED IN DURATION TO A PERIOD OF ONE YEAR FROM THE DATE OF ORIGINAL PURCHASE, ANY ACTION FOR BREACH OF ANY WARRANTY, INCLUDING BUT NOT LIMITED TO ANY IMPLIED WARRANTY OF MERCHANTABILITY, MUST BE BROUGHT WITHIN 60 MONTHS FROM DATE OF ORIGINAL PURCHASE. IN NO CASE SHALL SELLER BE LIABLE TO ANYONE FOR ANY CONSEQUENTIAL OR INCIDENTAL DAMAGES FOR BREACH OF THIS OR ANY OTHER WARRANTY, EXPRESS OR IMPLIED, OR UPON ANY OTHER BASIS OF LIABILITY WHATSOEVER, EVEN IF THE LOSS OR DAMAGE IS CAUSED BY THE SELLER'S OWN NEGLIGENCE OR FAULT. Some states do not allow limitation on how long an implied warranty lasts or the exclusion or limitation of incidental or consequential damages, so the above limitation or exclusion may not apply to you.

Seller does not represent that the product may not be compromised or circumvented; that the product will prevent any personal injury or property loss by burglary, robbery, fire or otherwise; or that the product will in all cases provide adequate warning or protection. Buyer understands that a properly installed and maintained alarm may only reduce the risk of a burglary, robbery, fire or other events occurring without providing an alarm, but it is not insurance or a guarantee that such will not occur or that there will be no personal injury or property loss as a result. CONSEQUENTLY, SELLER SHALL HAVE NO LIABILITY FOR ANY PERSONAL INJURY, PROPERTY DAMAGE OR OTHER LOSS BASED ON A CLAIM THE PRODUCT FAILED TO GIVE WARNING. HOWEVER, IF SELLER IS HELD LIABLE, WHETHER DIRECTLY OR INDIRECTLY, FOR ANY LOSS OR DAMAGE ARISING UNDER THIS LIMITED WARRANTY OR OTHERWISE, REGARDLESS OF CAUSE OR ORIGIN, SELLER'S MAXIMUM LIABILITY SHALL NOT IN ANY CASE EXCEED THE PURCHASE PRICE OF THE PRODUCT, WHILE SHALL BE THE COMPLETE AND EXCLUSIVE REMEDY AGAINST SELLER. This warranty gives you specific legal rights, and you may also have other rights which vary from state to state. No increase of alteration, written or verbal, to this warranty is authorized.



FIRE BURGLARY INSTRUMENTS INC.
Subsidiary of Pittway Corp.

149 Eileen Way, Syosset, NY 11791

Copyright © 1998 PITTWAY CORP



N9884 08/98